

COSA

Instruction Manual

Ceiling Fan

FE-AF02/C CX20-5B/56 LED

FE-AF04/C CX20-5B/46 LED

FE-AF06/C CX20-5B/40 LED

Version: 2025 V2

Table of Contents

Item	Page No.
1. Safety Precautions	1 - 2
2. Parts & Accessories	3
3. Installation Instruction	4 - 7
4. Transmitter Learning Process	8
5. Transmitter Assembly & Operation	9
5. Power Supply Connection	10
6. Circuit Diagram	11
7. Maintenance	12
8. Technical Specifications	12 - 13
9. Customer Service	13

Safety Precaution

Warning

Installation and maintenance work shall only be performed by qualified persons familiar with local code and regulation, and experienced with this type of appliance.

Primary suspension system length more than 300mm of modified (non-standard length rod) shall be supplied by the same manufacturer, with similar material, complete with safety wire rope, marking and installation instruction.

All field wiring must be installed in accordance with the national wiring regulation.

Means for disconnection from the supply mains having a contact separation in all poles must be incorporated in the fixed wiring in accordance with the wiring rules.

Before commencing wiring work, verify that the unit's rated voltage matches the nameplate specifications, and follow the wiring diagram.

The unit must be grounded to prevent a possible hazard due to insulation failure. The earth wire is approximately **60mm** longer than the safety wire. This is to ensure that at the event, whereby the suspension system fails, the live (L) neutral and (N) wires will break, leaving the fan remain earthed to prevent electrocution.

Tighten the blade firmly using a screwdriver.

Blades that are detached from the unit during operation will cause serious injuries and property damage.

This appliance is not intended for use by persons (including children) with reduced physical, sensory or mental capabilities, or lack of experience and knowledge, unless they have been given supervision or instruction concerning use of the appliance by a person responsible for their safety.

Children should be supervised to ensure that they do not play with the appliances.

Confirm that the power supply has been switched **OFF** before installing or servicing the unit.

Ensure that the blade is fully static before doing any maintenance work.

Safety Precaution

Disconnect from the main power supply before servicing the unit.

STOP using the ceiling fan when any abnormality or failure occurs.

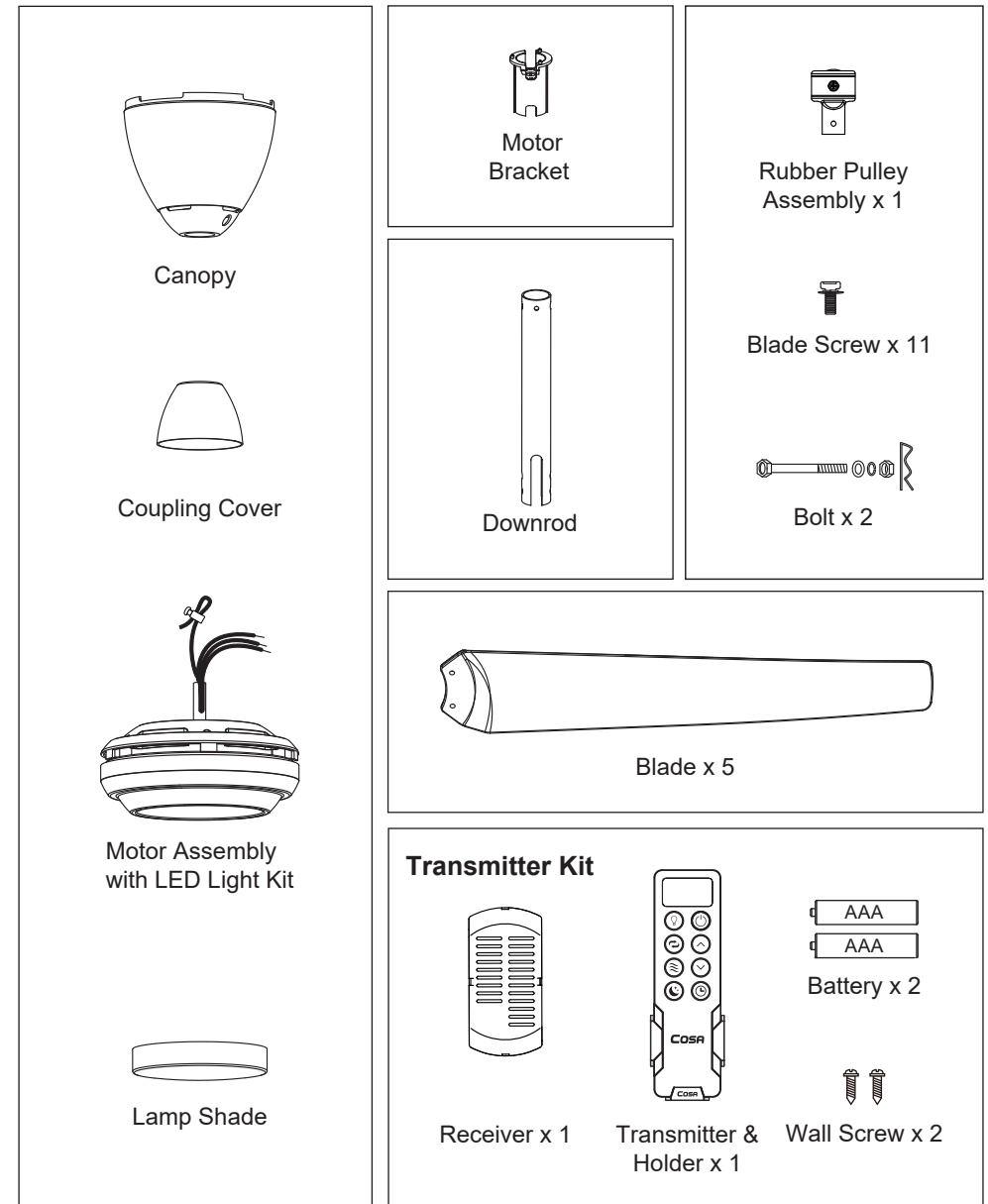
If unusual oscillating movement is observed, immediately stop using the ceiling fan and contact the manufacturer, its service agent or suitably qualified persons.

CAUTION

Please take note of the following important points when installing:

- The fixing means for attachment to the ceiling, such as hooks or other devices, shall be fixed with a sufficient strength to withstand 10 times the weight of the ceiling fan.
- The mounting of the suspension system shall be performed by the manufacturer, its service agent or suitably qualified persons.
- The fan is to be installed so that the blades are more than **2.5m** above the floor.
- **The safety cord should not be longer than the earthing conductor.**
If the suspension system fails, the fan's support must not depend on the earthing conductor. The earthing terminal within the fan assembly must be designed so that, even if any part of the suspension system detaches, the fan body remains effectively earthed.
- **Ensure that the unit's panel is closed after service or installation.**
Unsecured panels will cause the unit to operate noisily.
- **Sharp edges and coil surfaces are potential locations that may cause injury hazards.**
Avoid being in contact with these places.
- **Before turning off the power supply, set the remote controller's ON/OFF switch to the "OFF" position.**
Failure to do so may cause the fan to start automatically when power is restored, creating a safety hazard for service personnel and users.
- Keep the ceiling fan unit out of direct sunlight to prevent plastic components from degrading due to excessive heat and UV radiation.
- Ensure that the wire colours and terminal markings of the outdoor unit match those of the indoor unit.
- Do not use joined and twisted wires for the incoming power supply.
- Do not place any object in the path of the blades. Avoid raising objects or your arms near the ceiling fan.
- The fan suspension system and blade screw tightening shall be examined yearly.
- Replacement of parts of the safety suspension system device shall be performed by the manufacturer, its service agent or suitably qualified persons.
- The torque value for screw/bolts for securing the primary suspension system for fan motor is **2 Nm**.

Parts & Accessories



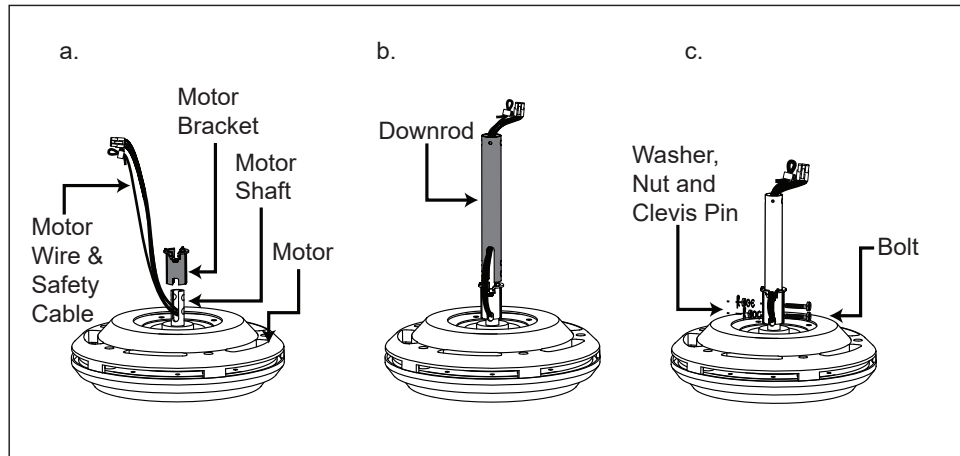
Installation Instruction

IMPORTANT: SWITCH OFF THE ELECTRICAL MAINS AT THE CIRCUIT BREAKER BOX.

Step 1

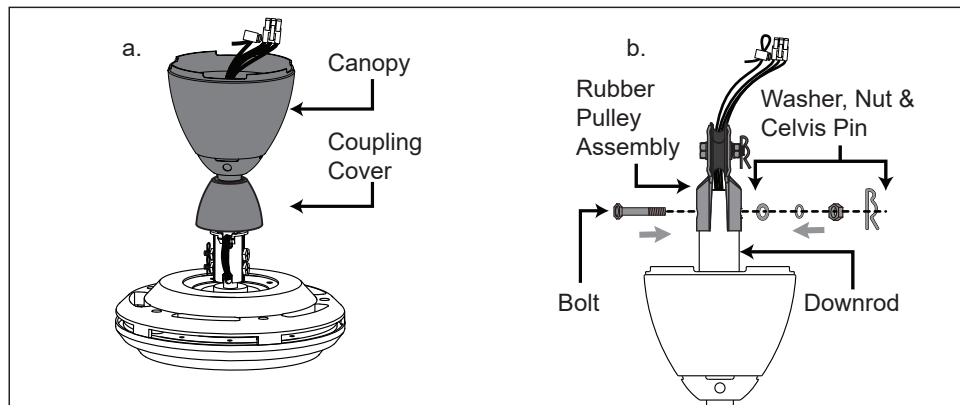
- Insert the Motor Bracket Motor to the Motor Shaft.
- Route Motor wires and Safety cable through the Downrod.
- Fix the Motor Bracket and Downrod to the Motor Assembly with Bolt, Washer, Nut and tighten them firmly. Insert the Clevis Pin.

IMPORTANT : Clevis Pin MUST be inserted to prevent Nut from loosening.



Step 2

- Assemble the Canopy and Coupling Cover through the Downrod.
- Fix the Rubber Pulley Assembly to the Downrod with Bolt, Washer, Nut and tighten them firmly. Insert the Clevis Pin.

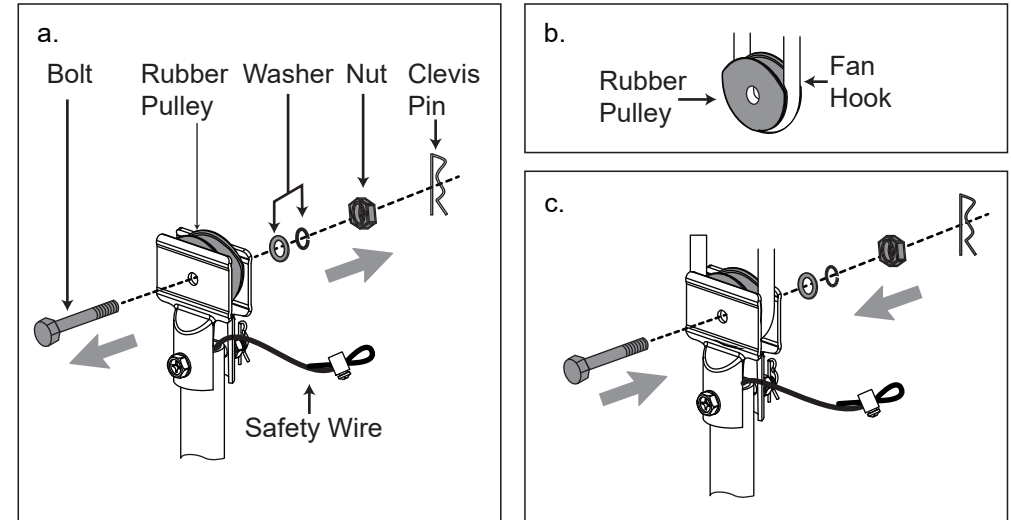


Installation Instruction

Step 3

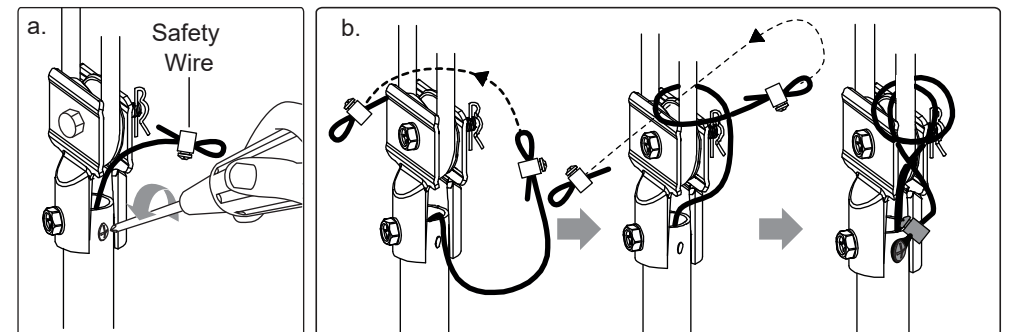
- Remove the Bolt, Clevis Pin, Nut, Washer and Rubber Pulley from the Downrod.
- Place the Rubber Pulley onto the ceiling hook.
- Fix back the Bolt, Clevis Pin, Nut and Washer.

IMPORTANT : Clevis Pin MUST be inserted to prevent Nut from loosening.



Step 4

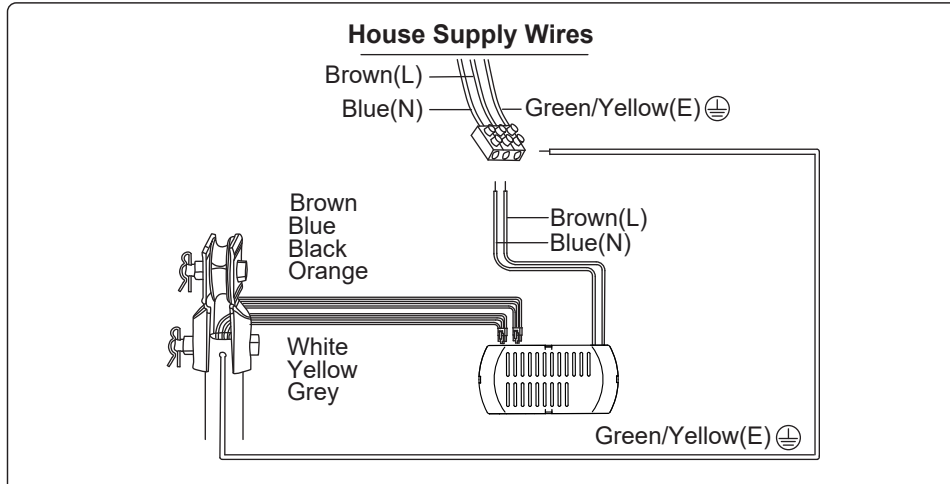
- Remove the Safety Wire screw and washer from the Downrod.
- Install the Safety Cable.



Installation Instruction

Step 5

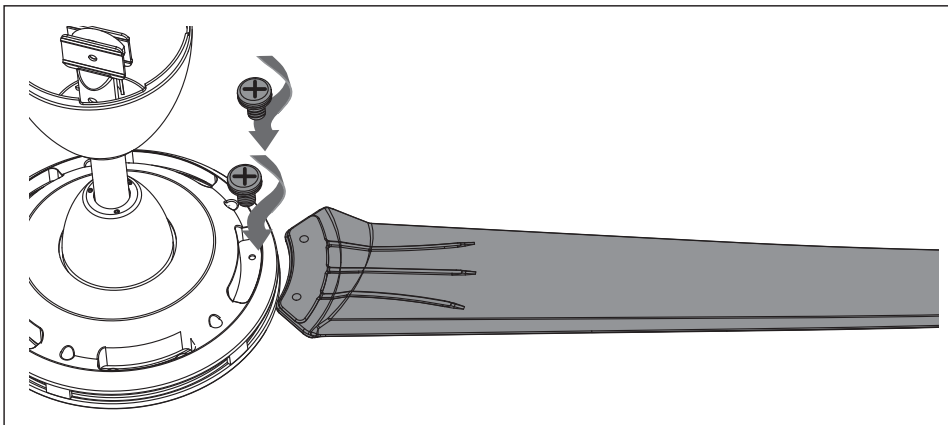
- Connect the Connectors from the Fan and Receiver.
- Connect the wires from the Receiver to the House's Supply Wire.
- Connect the Earth Wire to the House Supply Earth Terminal.



Step 6

Install the Blades on Motor with Blade Screw and Washer.

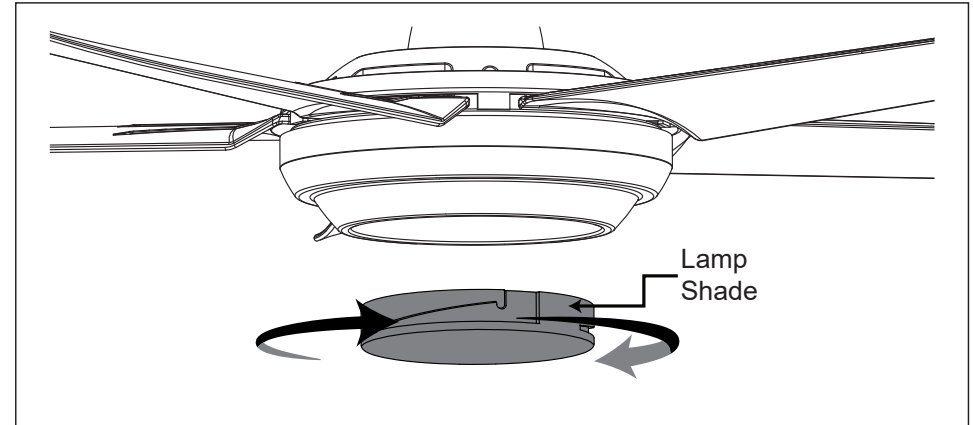
IMPORTANT: Assemble the Fan Blades only after the ceiling fan is mounted on the hook.



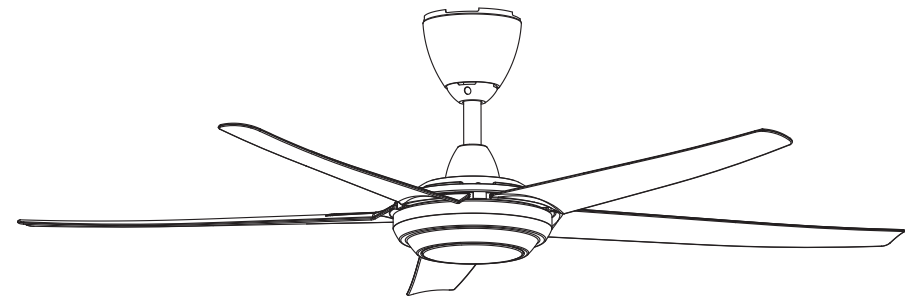
Installation Instruction

Step 7

Install the Lamp Shade by twisting in.



Below shows a complete installation diagram.



Transmitter Learning Process

IMPORTANT : DO NOT CONNECT THIS REMOTE CONTROL CEILING FAN TO REGULATOR OR DIMMER SWITCH.

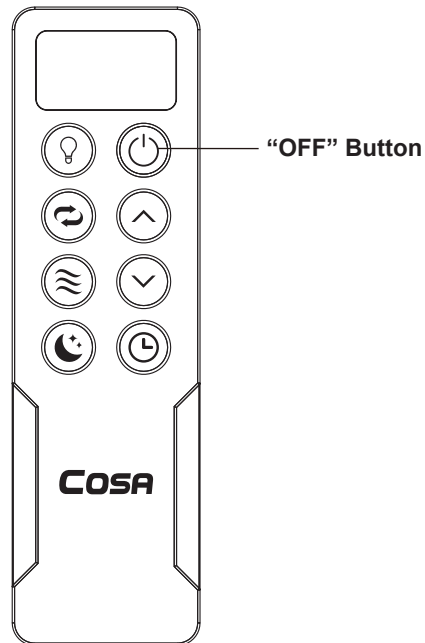
The receiver & transmitter are pre-programmed from the factory. If you wish to control 2 or more fans using 1 transmitter, the below steps are required:

INSERT THE 2 PCS OF BATTERIES (PROVIDED) INTO THE TRANSMITTER AND DO NOT PRESS ANY OTHER BUTTON DURING THIS PROCESS.

Step 1

- Turn on the power supply (wall switch) to the fan.
- Within 30 sec.,
 - Short press **"OFF"** button, receiver will **"Beep"** twice.
 - Within 3 sec., Long Press **"OFF"** button again, receiver will Long **"Beep"**.
- The programming process is completed and fan is ready to use.

If the fan is not responding to the transmitter, repeat Step b.

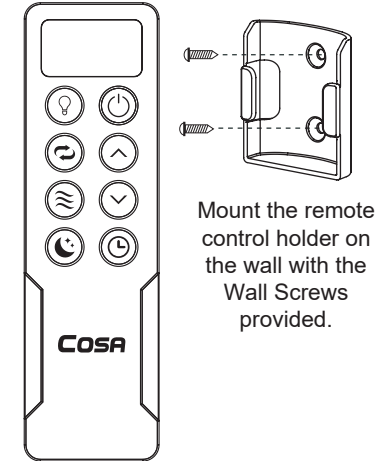


Transmitter Assembly & Operation

IMPORTANT : DO NOT CONNECT THIS REMOTE CONTROL CEILING FAN TO REGULATOR OR DIMMER SWITCH.

Function of Transmitter

- Turn On/Off Fan
- Increase fan speed
- Decrease fan speed
- Light Control**
 - Short Press to On/Off the light and change Light Colour Temperature.
 - Long Press to Dim the Light Brightness.
- Forward/Reverse, turn anti-clockwise or clockwise rotation.
- Fan speed will decrease gradually every 30 minutes until reach to speed 1.
- Natural wind, creating gentle sea-breeze effect.
- Timer off - fan turns off after preset time.

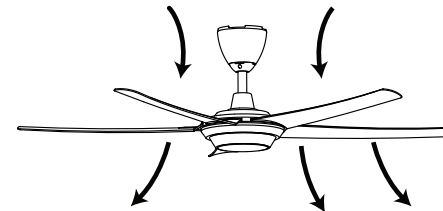


The transmitter & receiver feature a **"Last Memory"** function, which stores your previous fan settings. When the fan is turned on again, it will automatically resume operation at the last recorded fan settings.

Function of Forward & Reverse

Fan must be turned on and rotating.

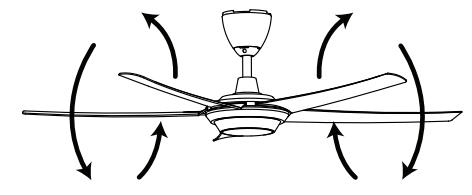
Press **Forward/Reverse** button. The fan will slow down and then change direction (approx. 15 sec). When the fan is slowing down to change direction, the **"Fan Speed"** function is disabled until direction has been changed.



Forward

Fan rotates anti-clockwise, blowing the air downwards, creating the wind chill effect.

Suitable for hot weather conditions.

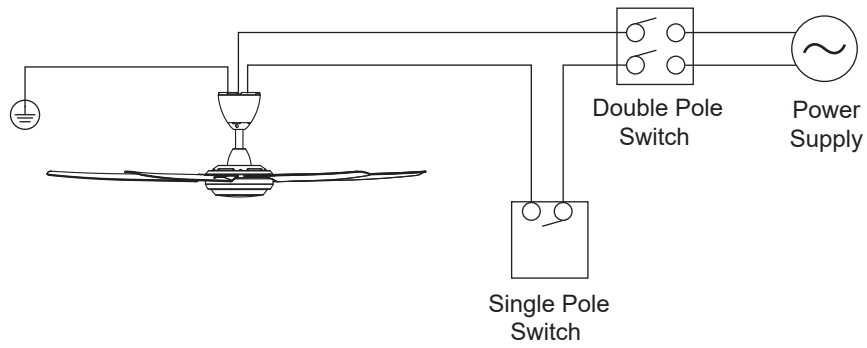


Reverse

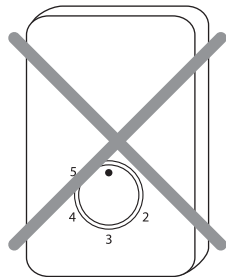
Fan rotates clockwise, drawing the air towards the ceiling and circulating the warm air downwards. This function works best at low speeds.

Suitable for air-conditioned conditions.

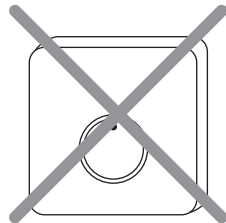
Power Supply Connection



IMPORTANT : DO NOT CONNECT THIS REMOTE CONTROL CEILING FAN TO REGULATOR OR DIMMER SWITCH.

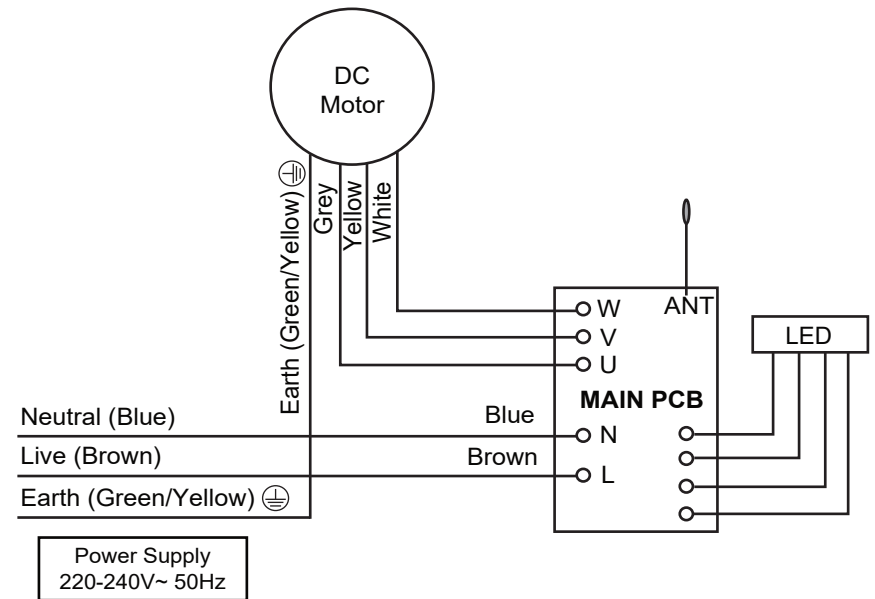


Regulator



Dimmer Switch

Circuit Diagram



Maintenance

Due to the fan's natural movement, connections may get loose after a period of usage. To ensure proper and safe usage, it is highly recommended to inspect and tighten all connections every **6 months**.

Cleaning

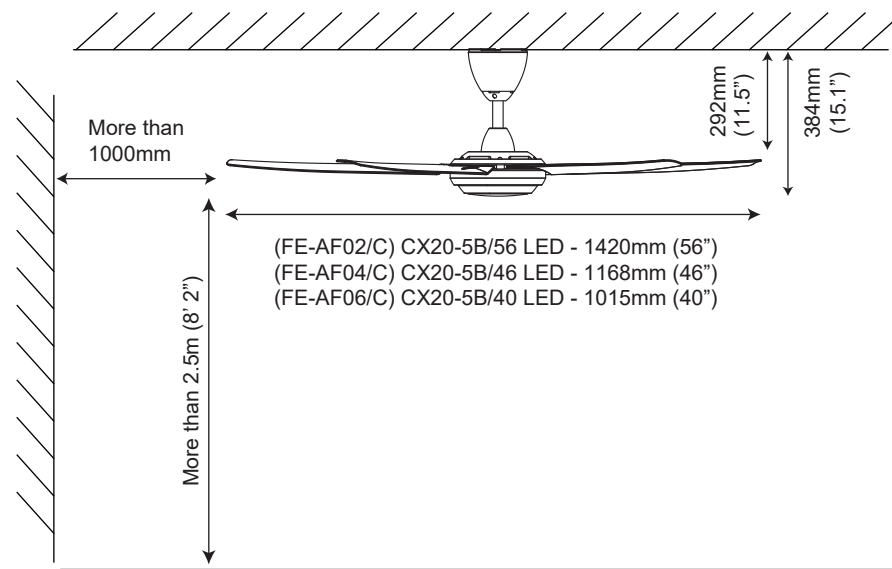
Cleaning your fan periodically will prolong its appearance. Basic cleaning procedures for the fan are as follows:

1. Use only lukewarm water. Do not use detergent, corrosive or acidic solutions.
2. Lightly dampen a soft, lint-free cloth before cleaning the fan. Avoid rough fabrics, as they may scratch the surface.
3. Do not bend the blades while cleaning. In the event where the blades are bent or damaged, order a new set of blades from authorised service centres/dealer shops.
4. There is no need to oil the fan.

Technical Specifications

Model	FE-AF02/C	FE-AF04/C	FE-AF06/C
Alt. Name	CX20-5B/56 LED	CX20-5B/46 LED	CX20-5B/40 LED
No. of Blades	5		
Fan Width	1420mm (56")	1168mm (46")	1015mm (40")
Motor RPM	60 - 200	75 - 230	76 - 217
Voltage	220-240V~ 50Hz		
Motor Wattage	3W - 45W	3W - 45W	3W - 40W
LED Wattage	18W	18W	18W
Nett Weight	5.2kg	5.1kg	4.9kg

Technical Specifications



Customer Service

If you need any technical assistance or faulty report, please contact our customer service centre at:

Alpha Home Appliances Sdn. Bhd. (390258-H)

Head Office : 6, Jalan Sungai Kayu Ara 32/37, Berjaya Park, Section 32, 40460 Shah Alam, Selangor.

Tel : 03-5740 6666

Fax : 03-5740 8220

Website : www.alphamalaysia.com

Email : info@alphamalaysia.com

Johor : 71, Jalan Molek 3/10, Taman Molek, 81100 Johor Bahru.

Tel : 07-353 4833 / 4933

Fax : 07-355 4233

Melaka : 19, 19-1 & 19-2, Jalan KSB 11, Taman Kota Syahbandar, 75200 Melaka.

Tel : 06-292 6292 / 6293

Fax : 06-292 6296

Perak : 11, Laluan Tasek Timur 5, Pusat Perdagangan Tasek Indra, 31400 Ipoh, Perak.

Tel : 05-545 2282 / 547 2282

Fax : 05-547 6282

Penang : 28, Jalan Icon City, Icon City, 14000 Bukit Mertajam, Penang.

Tel : 04-506 2366 / 2066 / 2566

Fax : 04-506 2966

Pahang : A 131, Jalan Dato' Wong Ah Jang, Taman Seng Heng, 25100 Kuantan, Pahang.

Tel : 09-516 5226

Fax : 09-513 9226