



Instruction Manual

STAND FAN
Model : TB-AA01/A
SF 60/14-DC

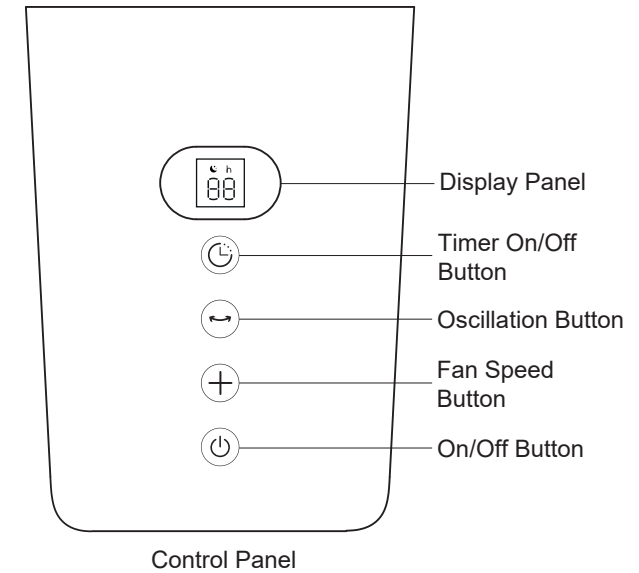
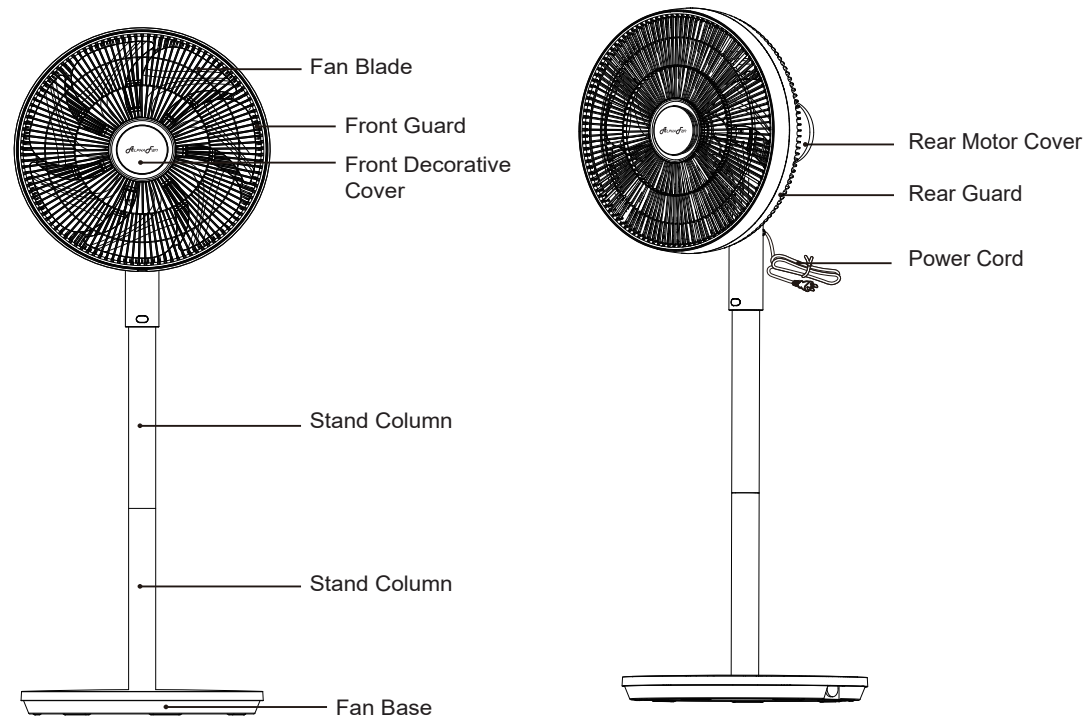
IMPORTANT : PLEASE READ BEFORE USING THE APPLIANCES





1. Unplug the power cord during installation, cleaning or relocation of fan.
2. Do not modify the length of the power cord.
3. Do not use the fan if the power cord or the plug is damaged, or the power socket is loose.
4. Repairing/servicing of the fan must be carried out by authorized and qualified electricians only.
5. If the power cord is damaged, it must be replaced by the manufacturer, its service agent or similarly qualified person to avoid a hazard.
6. Do not touch the fan and plug when your hands are wet.
7. Do not expose the fan to dripping or splashing water or objects filled with water, such as vase.
8. Do not use the fan near the gas stove, any fire source, unusually humid or high temperature, oil soot with a lots of metal powder, objects that may be drawn to fan, such as drapes or curtain and outdoor.
9. Do not insert hands or fingers into the front grille, or the movable parts.
10. Place the fan on a stable and level surface
11. This appliance is not intended for use by persons (including children) with reduced physical, sensory or mental capabilities, or lack of experience and knowledge, unless they have been given supervision or instruction concerning use of the appliance by a person responsible for their safety. Children should be supervised to ensure that they do not play with the appliance.

WARNING

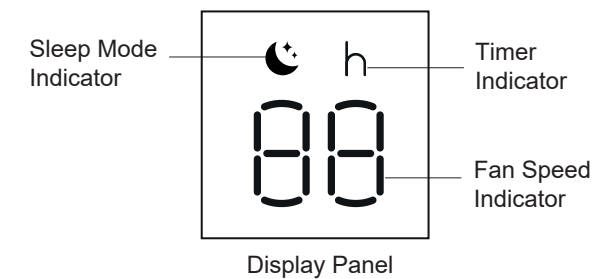
This appliance is designed to use only those parts supplied with this appliance and/or accessories designated specifically for use with this appliance. Using parts and/or accessories not designated for use with this appliance could result in personal injury or property damage.

PARTS & ACCESSORIES



-  Fan On/Off: Press once to turn On/Off the fan.
: Hold and long press to enter sleep mode.
-  Oscillation control: Press once to activate/deactivate the oscillation function.
-  Fan Speed Control: Press this button to increase fan speed from speed 1 - speed 12
-  Timer On: Function in Standby mode condition - 1, 2,3,....12hr.
Timer Off: Function while fan in operation - 1, 2,3,....12hr.

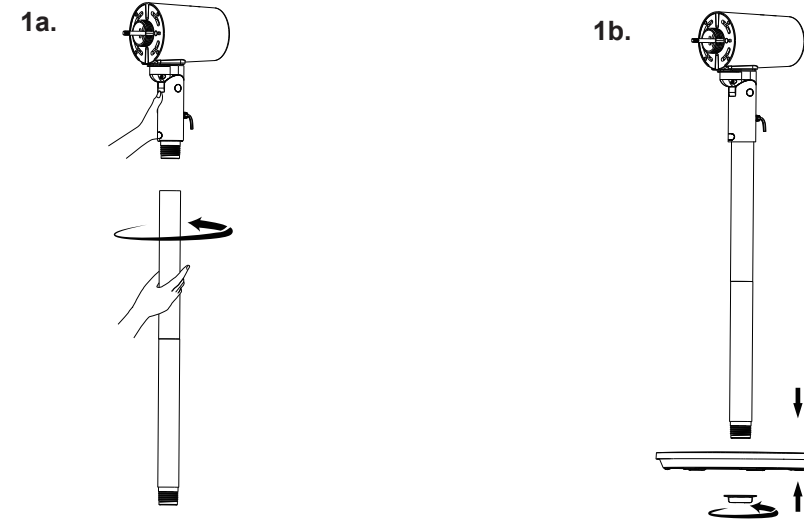
DISPLAY PANEL



WARNING: 1. Please consult qualified person(s) if there is difficulty during installation.
2. Please make sure no power is connected before installation.

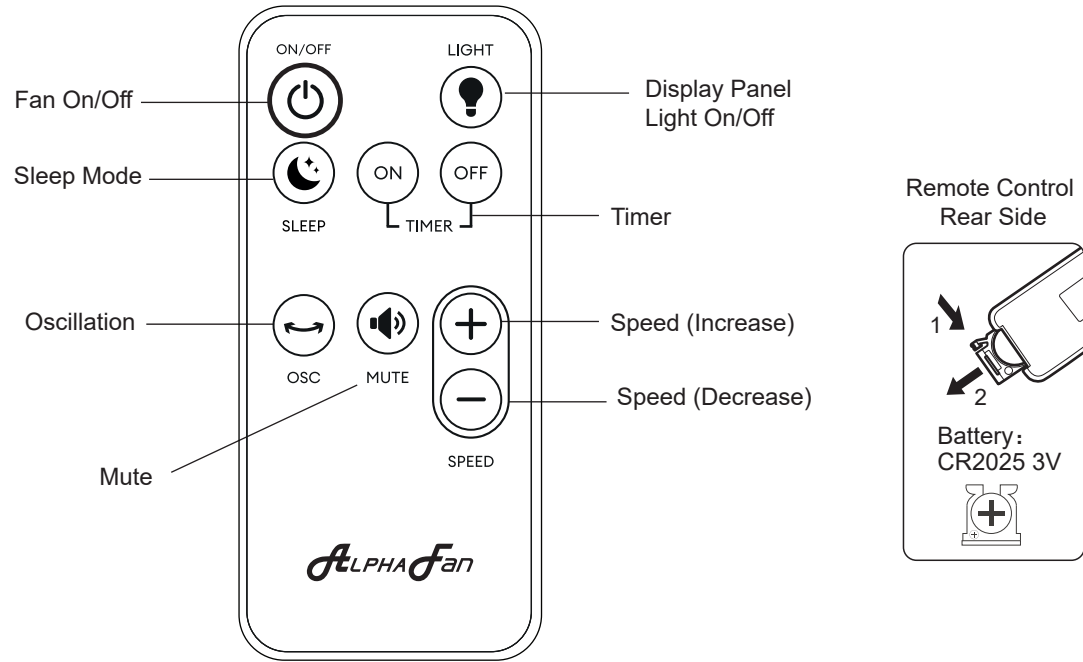
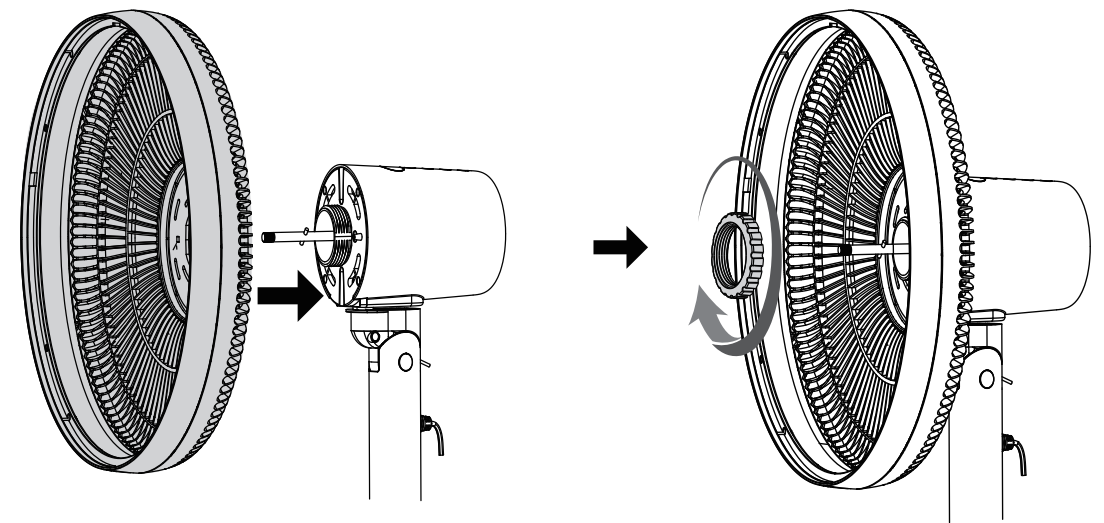
1. Stand Column Assembly







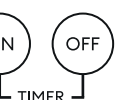
1a. Hold the fan head and rotate the stand column counterclockwise to tighten stand column.
1b. Fix the stand column into the fan base and tighten it using the base lock nut.
**Repeat step 1a and 1b by removing the stand column to adjust the desired fan height .



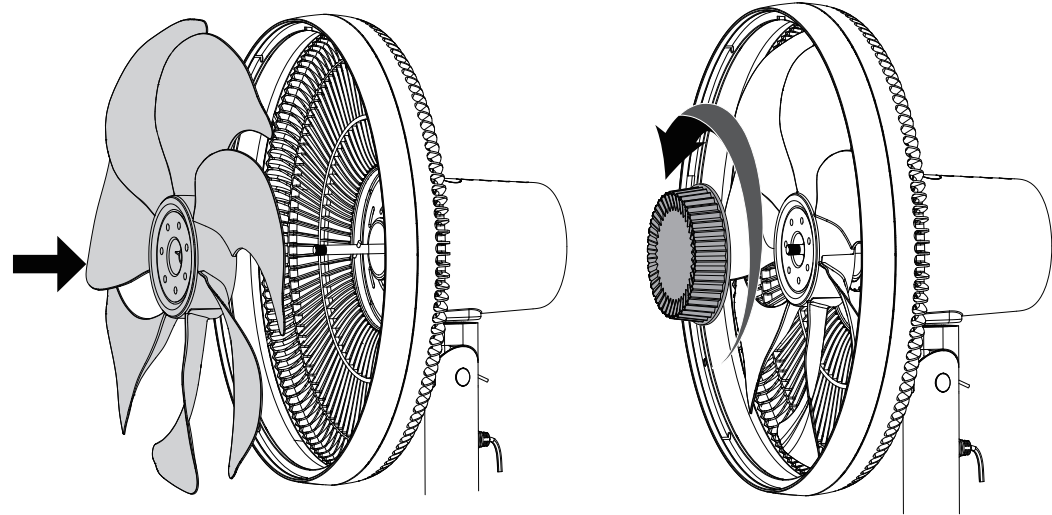
2. Fan Guard and Fan Blade Assembly

2a. Align the rear guard to the fan head and turn the lock nut clockwise to tighten.

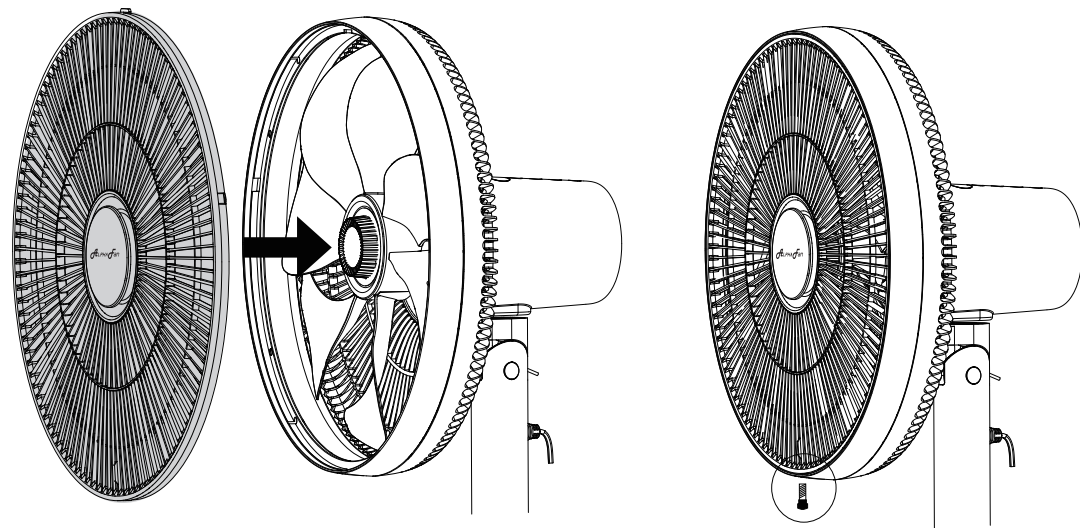


-  Fan On/Off: Press once to turn On/Off the fan.
-  Sleep Mode: Fan speed will decrease gradually every 30 minutes until reach to speed 1.
-  Oscillation Control: Press once to activate/deactivate the oscillation function.
-  Mute Function: Press once to mute/unmute the beep sound.
-  On/Off Display Panel Light: Press once to turn On/Off the display panel light.
-  Fan Speed: Press "+" / "-" to increase/decrease the fan speed
-  Timer On: Function in Standby mode condition - 1, 2,3,...12hr.
Timer Off: Function while fan in operation - 1, 2,3,...12hr.

2b. Install the fan blade through the motor shaft and please make sure the fan blade pin slot is align with the motor shaft pin. Turn the fan blade lock nut counterclockwise to tighten the nut.

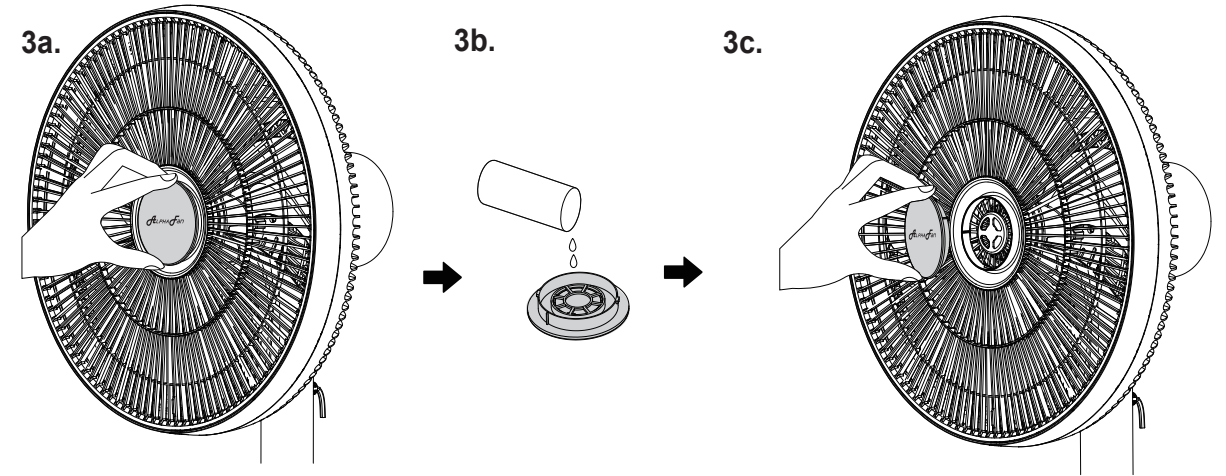


2c. Align the fan guard to rear guard then secure the safety lock at the bottom of the rear guard using a screw.

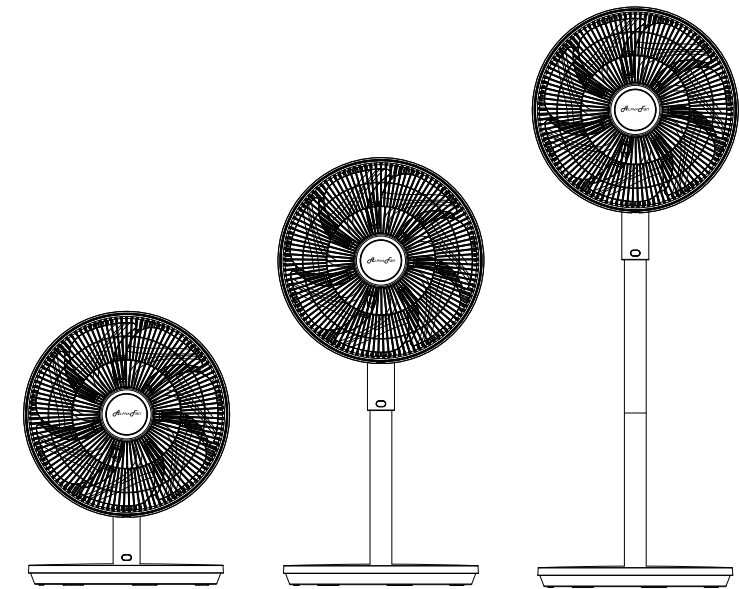


3. Aromatherapy Sensation Usage

- 3a. Remove the front decorative cover by turning it in counterclockwise direction.
- 3b. Then pour few drop of aromatherapy liquid in the decorative cover. Wait for a few second to make sure liquid fully absorb by the sponge.
- 3c. Install back the decorative cover by turning it in clockwise direction until "Click" sound can be heard



4. Complete Assembly



IMPORTANT : BEFORE PERFORMING ANY MAINTENANCE WORK, UNPLUG THE FAN FROM THE SUPPLY SOCKET.

Cleaning

1. Use soft or lint-free cloth and mild detergent to clean the fan. Do not use corrosive or acidic solution to avoid scratching and corrosion on the body.
2. To clean between the guards, use pipe cleaner, flexible dust wand, vacuum cleaner or compressed air to gently remove dust.
3. DO NOT wet or immerse the motor, switch, power cord and plug in water.
4. Please make sure the whole fan is in good condition before proceed to use.

If you need any technical assistance or faulty report, please contact our customer service centre at :

Malaysia

Alpha Home Appliances Sdn. Bhd. (390258-H)

Head Office : 6, Jalan Sungai Kayu 32/37, Berjaya Park, Sect 32,40460 Shah Alam, Selangor.

Tel : 03-5740 6666

Fax : 03-5740 8220

Website : www.alphamalaysia.com

Email : info@alphamalaysia.com

Johor

: 71, Jalan Molek 3/10, Taman Molek, 81100 Johor Bahru.

Tel : 07-353 4833 / 4933

Fax : 07-355 4233

Melaka

: 19, 19-1 & 19-2, Jalan KSB 11, Taman Kota Syahbandar, 75200 Melaka.

Tel : 06-292 2398 / 2399

Fax : 06-292 2392

Perak

: 16, Jalan Tasek Timur, Taman Tasek Indra, 31400 Ipoh, Perak.

Tel : 05-545 2282 / 547 2282

Fax : 05-547 6282

Penang

: 28 Jalan Icon City, Icon City, 14000 Bukit Mertajam, Pulau Pinang.

Tel : 04-506 2366 / 2066 / 2566

Fax : 04-506 2966

Pahang

: A131, Jalan Dato Wong Ah Jang, Taman Liza, 25100 Kuantan, Pahang.

Tel : 09-516 5226

Fax : 09-513 9226

Singapore

Alpha Sales & Services Pte. Ltd. (200709461 R)

50, Ubi Avenue 3, #02-16/17, Frontier, Singapore 408866.

Tel : +65 6841 0111

Fax : +65 6747 0030

Website : www.alphasingapore.com

Email : customercare@alphasingapore.com

TECHNICAL SPECIFICATIONS

Model	Voltage	Wattage
TB-AA01/A	220V-240V ~ 50-60Hz	26W