



Instruction Manual

Model Name
TB-AF01/B

AIR COOLER
Alt. Name
BREEZ ACM/6L-AC

Version: 2024. V1

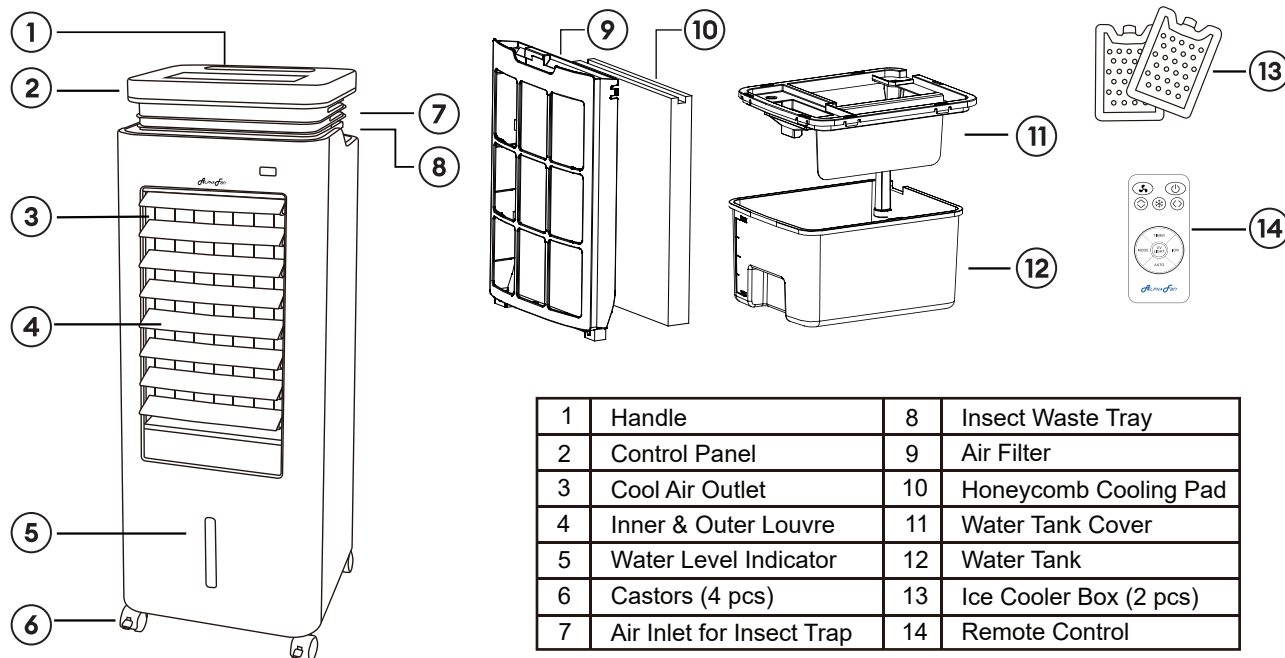
IMPORTANT : PLEASE READ BEFORE USING THE APPLIANCE. SAFETY PRECAUTION SHOULD BE FOLLOWED TO REDUCE THE RISK OF FIRE ELECTRICAL SHOCK AND PERSONAL INJURY.

1. Unplug the Power Cord during installation, cleaning, refilling of water or relocation of appliance.
2. Do not modify the length of the Power Cord.
3. Do not use the appliance if the Power Cord or Plug is damaged, or the power socket is loose.
4. Repairing/servicing of the appliance must be carried out by authorized and qualified electricians only.
5. If the Power Cord is damaged, it must be replaced by the manufacturer, its service agent or similarly qualified person to avoid a hazard.
6. Do not touch the appliance and Plug when your hands are wet.
7. Do not expose the appliance to dripping or splashing water or objects filled with water, such as vase.
8. Do not use the appliance near the gas stove, any fire source, unusually humid or high temperature, oil soot with a lots of metal powder, objects that may be drawn to fan, such as drapes or curtain and outdoor.
9. Do not insert hands or fingers into the appliance, or movable parts.
10. Place the appliance on a stable and level surface.
11. Do not hang or mount appliance on wall or ceiling.
12. Do not operate or use when appliance housing is damaged.
13. This appliance is not intended for use by persons (including children) with reduced physical, sensory or mental capabilities, or lack of experience and knowledge, unless they have been given supervision or instruction concerning use of the appliance by a person responsible for their safety. Children should be supervised to ensure that they do not play with the appliance.
14. Do not operate the appliance when the Rear Frame is removed from appliance or if there is a loose-fitting Rear Frame. Doing so can cause serious injury or dangerous electrical shock.

WARNING

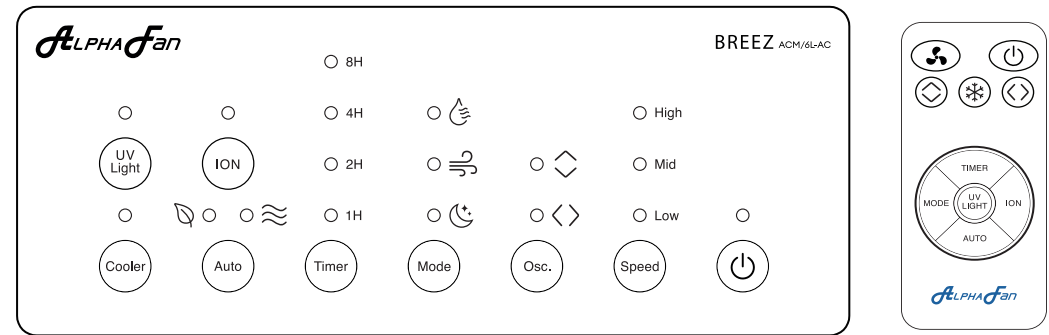
This appliance is designed to use only those parts supplied with this appliance and/or accessories designated specifically for use with this appliance. Using parts and/or accessories not designated for use with this appliance could result in personal injury or property damage.

PARTS & ACCESSORIES



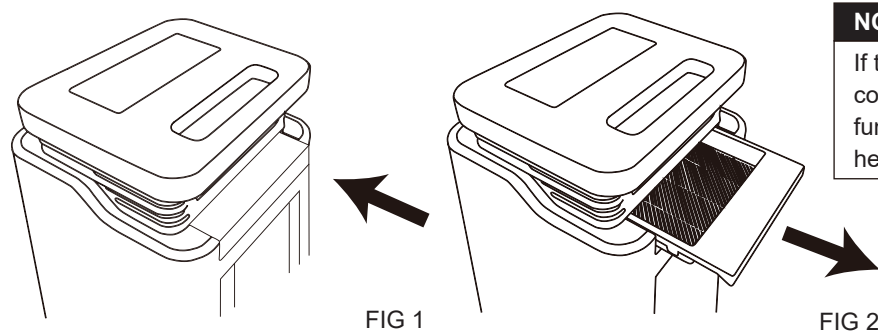
1	Handle	8	Insect Waste Tray
2	Control Panel	9	Air Filter
3	Cool Air Outlet	10	Honeycomb Cooling Pad
4	Inner & Outer Louvre	11	Water Tank Cover
5	Water Level Indicator	12	Water Tank
6	Castors (4 pcs)	13	Ice Cooler Box (2 pcs)
7	Air Inlet for Insect Trap	14	Remote Control

CONTROL PANEL



Button	Function & Descriptions	
	Power - ON or OFF Air Cooler	
	Fan Speed - 3 selections: Low, Medium & High	
Osc.		SWING - Louvers automatically swings in horizontal direction.
		SWING - Louvers automatically swings in vertical direction.
Mode		DRY WIND - The cooler will work at high speed for 20 minutes and return to standby mode automatically. During "Dry" mode, only the "Mode" button and "Power" button can be activate.
		NATURAL WIND - The cooler will work at the pattern of wind cycle: High speed for 6 seconds, medium speed for 6 seconds, low speed for 6 seconds, then stop for 3 seconds and repeat.
		SLEEP WIND - The cooler will work at the pattern of wind cycle: Low speed for 10 seconds, Mild speed for 10 seconds and repeat.
Timer	TIMER OFF - To turn OFF the Air Cooler at the preset time. 1,2,4,8 hours.	
ION	IONIZER - Press the button to activat/de-activate the ionizer function.	
Auto		ECO - The cooler's speed adapts to the ambient temperature: high above 35°C, medium between 29-34°C, low from 25-28°C, and mild below 25°C.
		SILENT - The cooler will work at Mild speed continuously.
Cooler		COOLING - The unit will begin pumping and showering the Honeycomb Cooling Pad.
UV Light	UV LIGHT - To activate the Mosquito Trap function.	

Before activating the UV Light, ensure that the insect waste tray is properly installed. (See FIG 1)



NOTE :
If the insect waste tray is not correctly installed, the UV Light function won't activate, and you'll hear 3 beep sounds.

1. Once the insect waste tray is correctly installed, press the UV Light button. The air trapping function will activate after 1 minute, initiating the UV Light process.
2. Regularly inspect the insect waste tray to remove insect debris.

IMPORTANT: ALWAYS TURN OFF THE UNIT BEFORE CHECKING THE TRAY.

FILLING WATER INTO WATER TANK

1. Make sure the water level is above the Min. water level and below the max level. (See FIG 3)
2. Press the Cooler button; the cooling indicator light will illuminate, and the unit will begin pumping and showering the cooling pad.
3. Enjoy the refreshing and comfortably cool breeze.

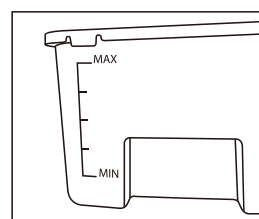


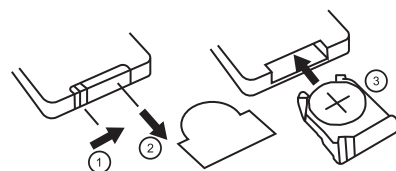
FIG 3

NOTE :

1. Fill the water tank before using the Cooling function. If it's low or empty, the function won't activate until refilled. You can use the unit as a regular fan without water; just keep the "Cooling" button off in humid conditions.
2. Adding ice cubes or an ice cooler box to the water tank enhances cooling.

REMOTE CONTROL INSTALLATION

1. When using the remote control, remove the battery protector first.
2. The key method operates the same as the control panel version.
3. Place the battery provided at the battery holder and insert to the remote control.



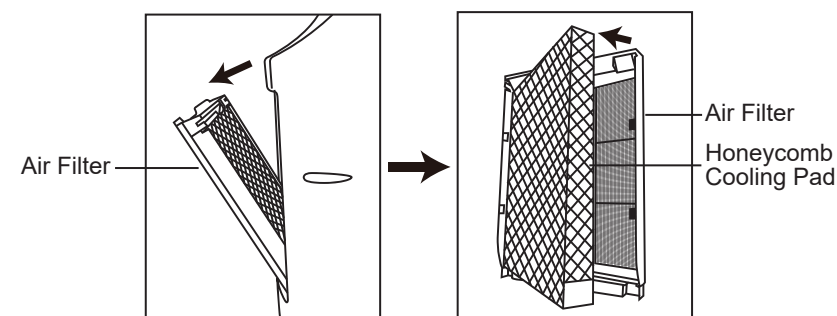
(Installation diagram for Remote Control. Picture for reference only, please prevail in kind.)
For the first time, please pull out the battery protective film.

WARNING: DO NOT OPERATE THE APPLIANCE WHEN THE REAR FRAME IS REMOVED FROM THE APPLIANCE OR IF THERE IS A LOOSE-FITTING REAR FRAME. DOING SO CAN CAUSE SERIOUS INJURY OR DANGEROUS ELECTRICAL SHOCK.

IMPORTANT : BEFORE PERFORMING ANY CLEANING & MAINTENANCE WORK, UNPLUG APPLIANCE FROM THE SUPPLY SOCKET.

CLEANING THE HONEYCOMB COOLING PAD AND AIR FILTER

1. Pull the handle of Rear Frame and remove from unit.
2. Wash the Honeycomb Cooling Pad and Air Filter under clean water as needed or dust off dirt with a soft brush or cloth.



NOTE :

For optimal performance and an extended product lifespan, it is recommended to clean the Honeycomb Cooling Pad and Air Filter every 2 weeks. In areas where the surrounding air is dusty, cleaning should be carried out weekly.

GENERAL CLEANING

Avoid using gasoline, thinners, solvents, ammonia, or other chemicals for cleaning and maintenance.

CLEAN THE WATER TANK

To clean the water tank, pull it out, ensuring you lift it slightly to release the clamp locator beneath it. Use a damp cloth with a mild detergent for cleaning. Afterward, rinse it with clean water, let it dry, and then reinstall the tank.

CLEAN THE INSECT WASTE TRAY

Pull out the insect waste tray, remove any waste inside, and wash the tray with a mild detergent. Make sure it's completely dry before reinstalling it in the cooler.

CLEAN THE EXTERNAL PART

For cleaning external parts, use a mild detergent and a soft cloth.

NOTE:

1. Safety switch turns off unit when back cover is removed.
2. Regularly clean the filter for optimal performance.
3. Never immerse unit, cord, or plug in water.
4. For repairs, visit our service center; do not attempt DIY.

Model	TB-AF01/B
Alt. Name	BREEZ ACM/6L-AC
Voltage	220-240V~50/60Hz
Wattage	60W
Water Tank Capacity	6 litres
Dimensions	290 x 295 x 773mm
Nett Weight	6.5kg

CUSTOMER SERVICE CENTRE

If you need any technical assistance or faulty report, please contact our customer service centre at :

Malaysia

Alpha Home Appliances Sdn. Bhd. (390258-H)

Head Office : 6, Jalan Sungai Kayu 32/37, Berjaya Park, Sect 32,40460 Shah Alam, Selangor.

Tel : 03-5740 6666 Fax : 03-5740 8220

Website : www.alphamalaysia.com Email : info@alphamalaysia.com

Johor : 71, Jalan Molek 3/10, Taman Molek, 81100 Johor Bahru.

Tel : 07-353 4833 / 4933 Fax : 07-355 4233

Melaka : 19, 19-1 & 19-2, Jalan KSB 11, Taman Kota Syahbandar, 75200 Melaka.

Tel : 06-292 2398 / 2399 Fax : 06-292 2392

Perak : 11, Jalan Tasek Timur 5, Taman Tasek Indra, 31400 Ipoh, Perak.

Tel : 05-545 2282 / 547 2282 Fax : 05-547 6282

Penang : 28 Jalan Icon City, Icon City, 14000 Bukit Mertajam, Pulau Pinang.

Tel : 04-506 2366 / 2066 / 2566 Fax : 04-506 2966

Pahang : A131, Jalan Dato Wong Ah Jang, Taman Liza, 25100 Kuantan, Pahang.

Tel : 09-516 5226 Fax : 09-513 9226

Singapore

Alpha Sales & Services Pte. Ltd. (200709461 R)

50, Ubi Avenue 3, #02-16/17, Frontier, Singapore 408866.

Tel : +65 6841 0111 Fax : +65 6747 0030

Website : www.alphasingapore.com Email : customercare@alphasingapore.com